



People Drawn in The 53 Stations of the Tokaido—Kawasaki by Ukagawa Hiroshige I



Wild Geese Flying under the Full Moon by Utagawa Hiroshige I

川崎浮世絵ギャラリー
 ~ 斎藤文夫コレクション ~
 KAWASAKI UKIYO-E GALLERY SAITO FUMIO COLLECTION

<Concept of the Logo>

This logo design was inspired by the ferry boatman at Rokugo poling a boat with all his strength in The 53 Stations of the Tokaido—the Rokugo Ferry at Kawasaki by Utagawa Hiroshige I.

Open: 11:00 am – 6:30 pm

Admission Fee: ¥500

(High school students or younger, individuals with disabilities and one caregiver are free of charge.)

Closed: Mondays (Next business day when Monday is a holiday), Year-end and New Year's holidays, period of replacing exhibits

TEL: 080-8750-3991



Kawasaki Ekimae Tower RiverK 3F, 12-1 Ekimae-honcho, Kawasaki Ward, Kawasaki City, Kanagawa Prefecture, 210-0007, Japan
 Kawasaki Ukiyo-e Gallery (Art Garden Kawasaki Special Exhibition Room)

A 2-min. walk from JR Kawasaki Station North Exit East Side/ 3-min. walk from Central East Exit/ 2-min. walk from Keikyu Kawasaki Station



This program is conducted with support from the MAGCUL Promotion Project Fund provided by Kanagawa Prefecture.

UKIYO-E!

A Japanese Treasure

KAWASAKI UKIYO-E GALLERY
 SAITO FUMIO COLLECTION



The 53 Stations of the Tokaido—Kawasaki by Utagawa Hiroshige I

■ Features of Ukiyo-e Collection at Kawasaki Isago-no-Sato Museum

An extensive collection including rarely seen works

- The collection has approximately 4,000 works, including about 100 original ukiyo-e paintings. It's a great collection expressing details of historical sites in Kawasaki.
- Many of the works included in the collection are related to Kawasaki and Kanagawa. It is a comprehensive collection of ukiyo-e by a wide range of artists specializing in different genres chosen systematically from different times.

A number of exhibitions held both at home and abroad earning high acclaim

- Entitled "Saito Fumio Collection," it has been exhibited at Mitsubishi Ichigokan Museum, Tokyo, Yonago City Museum of Art, Yokosuka Museum of Art, and Hiratsuka Museum of Art in Japan as well as the Japan Information and Culture Center in Washington D.C., Toulouse-Lautrec Museum in France, Ara Pacis Museum in Rome, Italy, University of Maryland Gallery in the U.S. and many more locations overseas.

The Kawasaki Foundation

Planning & Cooperation: Kawasaki Isago-no-Sato Museum, Kawasaki City



The 53 Stations of the Tokaido—Nihombashi by Utagawa Hiroshige I



Ryogoku River Opening by Kitagawa Utamaro



Thirty-six Views of Mt. Fuji—The Great Wave off Kanagawa by Katsushika Hokusai



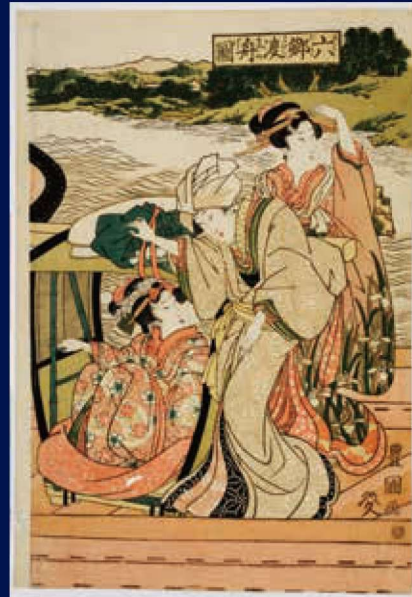
The 53 Stations of the Tokaido—Hakone by Utagawa Hiroshige I



Steam Locomotive in Yokohama by Utagara Hiroshige III



Ichikawa Monnosuke II as Date no Yosaku by Toshusai Sharaku



The Rokugo Ferry by Utagawa Toyokuni I



One Hundred Famous Views in Edo—Sudden Shower over Shin-Ohashi Bridge and Atake by Utagawa Hiroshige I



The 53 Stations of the Tokaido—Hiratsuka—Goro Tokimune by Utagawa Toyokuni III